

**Woodrow Wilson Elem School**  
**East Peoria SD 86**  
**East Peoria, ILLINOIS**



**ILLINOIS**  
**SCHOOL**  
**REPORT**  
**CARD**

**GRADES : K 1 2**

State and federal laws require public school districts to release report cards to the public each year.

Starting in 2009, charter school information is included in district statistics.

**STUDENTS**

RACIAL/ETHNIC BACKGROUND AND OTHER INFORMATION															
	White	Black	Hispanic	Asian	Native Hawaiian /Pacific Islander	American Indian	Two or More Races	Percent Low-Income	Percent Limited-English-Proficient	Percent IEP	High Sch. Dropout Rate	Chronic Truancy Rate	Mobility Rate	Attendance Rate	Total Enrollment
<b>School</b>	89.9	1.7	5.6	0.6	0.0	0.0	2.2	52.5	0.6	16.2		0.0	14.3	94.4	179
<b>District</b>	89.5	1.6	3.5	1.3	0.2	0.3	3.7	41.4	0.7	15.0		0.8	13.6	94.1	1,795
<b>State</b>	51.4	18.3	23.0	4.1	0.1	0.3	2.8	48.1	8.8	14.0		3.2	12.8	94.0	2,074,806

**Low-income** students come from families receiving public aid; live in institutions for neglected or delinquent children; are supported in foster homes with public funds; or are eligible to receive free or reduced-price lunches.

**IEP** Students are those students eligible to receive special education services.

**Limited-English-proficient** students are those students eligible for transitional bilingual programs.

**Mobility rate** is based on the number of times students enroll in or leave a school during the school year.

**Chronic truants** are students who are absent from school without valid cause for 18 or more of the last 180 school days.

**Total Enrollment** is based on Home School.

**INSTRUCTIONAL SETTING**

PARENTAL CONTACT*		STUDENT-TO-STAFF RATIOS			
	Percent	Pupil-Teacher Elementary	Pupil-Teacher Secondary	Pupil-Certified Staff	Pupil-Administrator
<b>School</b>	100.0	--	--	--	--
<b>District</b>	100.0	18.1		12.6	151.7
<b>State</b>	96.0	18.8		13.6	211.3

\* Parental contact includes parent-teacher conferences, parental visits to school, school visits to home, telephone conversations, and written correspondence.

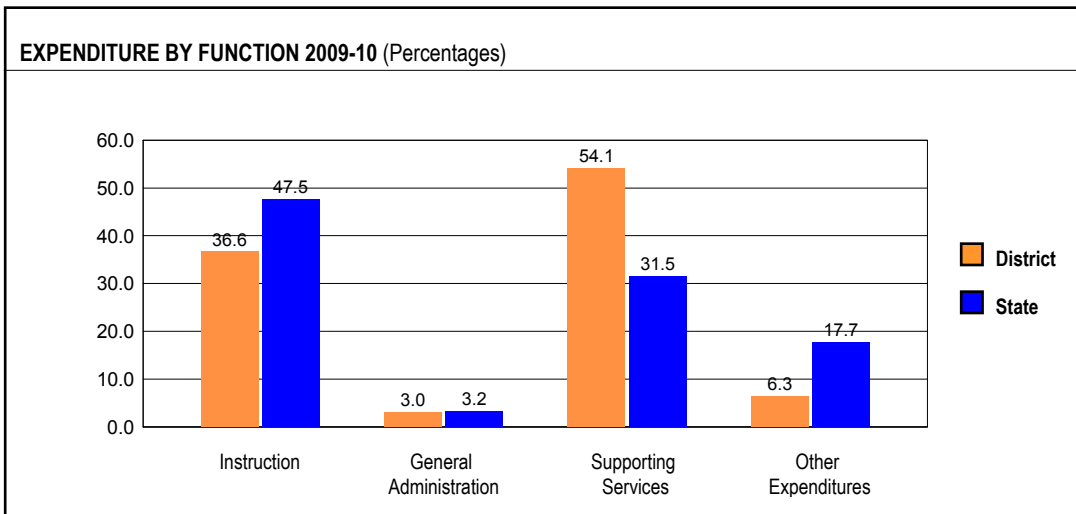
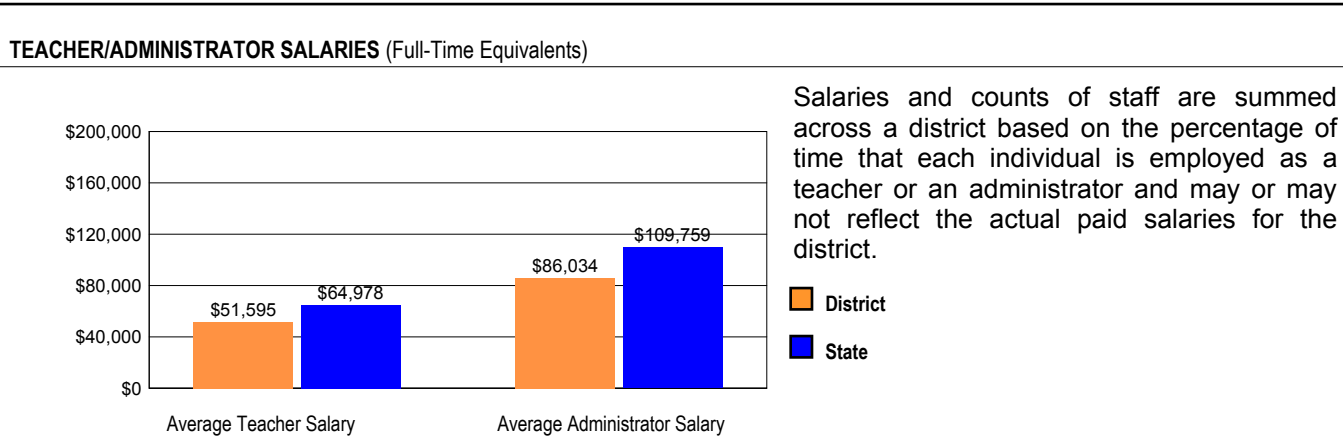
AVERAGE CLASS SIZE (as of the first school day in May)										
Grades	K	1	2	3	4	5	6	7	8	9 - 12
<b>School</b>	22.0	20.7	19.7							
<b>District</b>	20.9	20.7	20.3							
<b>State</b>	20.9	21.6	21.8							

TEACHER INFORMATION (Full-Time Equivalents)												
	White	Black	Hispanic	Asian	Native Hawaiian/Pacific Islander	American Indian	Two or More Races	Unknown	Male	Female	Total Number	
<b>District</b>	99.2	0.8	0.0	0.0	0.0	0.0	0.0	0.0	13.6	86.4	118	
<b>State</b>	82.4	6.1	5.0	1.2	0.1	0.1	0.7	4.3	23.1	76.9	128,262	

TEACHER INFORMATION ( Continued )					
	Average Teaching Experience (Years)	% of Teachers with Bachelor's Degrees	% of Teachers with Master's & Above	% of Teachers with Emergency or Provisional Credentials	% of Classes Not Taught by Highly Qualified Teachers
School	--	--	--	0.0	0.0
District	12.0	39.8	60.2	0.0	0.0
State	13.2	39.5	60.4	0.6	0.8

Some teacher/administrator data are not collected at the school level.

## SCHOOL DISTRICT FINANCES



REVENUE BY SOURCE 2009-10				EXPENDITURE BY FUND 2009-10			
	District	District %	State %		District	District %	State %
Local Property Taxes	\$12,470,998	68.8	58.9	Education	\$13,202,381	52.0	72.9
Other Local Funding	\$1,408,126	7.8	6.4	Operations & Maintenance	\$1,403,137	5.5	6.0
General State Aid	\$1,550,539	8.6	14.9	Transportation	\$1,301,637	5.1	3.8
Other State Funding	\$1,068,578	5.9	7.5	Debt Service	\$1,225,238	4.8	7.2
Federal Funding	\$1,633,291	9.0	12.4	Tort	\$130,423	0.5	1.2
TOTAL	\$18,131,532			Municipal Retirement/ Social Security	\$415,023	1.6	1.9
				Fire Prevention & Safety	\$15,468	0.1	0.7
				Site & Construction/ Capital Improvement	\$7,718,516	30.4	6.4
				TOTAL	\$25,411,823		

OTHER FINANCIAL INDICATORS				
	2008 Equalized Assessed Valuation per Pupil	2008 Total School Tax Rate per \$100	2009-10 Instructional Expenditure per Pupil	2009-10 Operating Expenditure per Pupil
District	\$210,196	2.82	\$5,504	\$9,806
State	**	**	\$6,773	\$11,537

\*\* Due to the way Illinois school districts are configured, state averages for equalized assessed valuation per pupil and total school tax rate per \$100 are not provided.

**Equalized assessed valuation** includes all computed property values upon which a district's local tax rate is calculated.

**Total school tax rate** is a district's total tax rate as it appears on local property tax bills.

**Instructional expenditure per pupil** includes the direct costs of teaching pupils or the interaction between teachers and pupils.

**Operating expenditure per pupil** includes the gross operating cost of a school district excluding summer school, adult education, bond principal retired, and capital expenditures.

## 2011 ADEQUATE YEARLY PROGRESS (AYP) Status Report

Is this school making Adequate Yearly Progress (AYP)?	Yes	Has this school been identified for School Improvement according to the AYP specifications of the federal No Child Left Behind Act?	No
Is this school making AYP in Reading?	Yes	2011-12 Federal Improvement Status	
Is this school making AYP in Mathematics?	Yes	2011-12 State Improvement Status	

	Percent Tested on State Tests				Percent Meeting/Exceeding Standards *						Other Indicators			
	Reading		Mathematics		Reading			Mathematics			Attendance Rate		Graduation Rate	
	%	Met AYP	%	Met AYP	%	Safe Harbor Target **	Met AYP	%	Safe Harbor Target **	Met AYP	%	Met AYP	%	Met AYP
<b>State AYP Minimum Target</b>	95.0		95.0		85.0			85.0			91.0		82.0	
All	98.3	Yes	98.3	Yes	80.0		Yes	96.3		Yes	94.4	Yes		
White	98.3	Yes	98.3	Yes	80.0		Yes	96.3		Yes				
Black														
Hispanic														
Asian														
Native Hawaiian/ Pacific Islander														
American Indian														
Two or More Races														
LEP														
Students with Disabilities														
Economically Disadvantaged														

### Four Conditions Are Required For Making Adequate Yearly Progress (AYP):

1. At least 95% tested in reading and mathematics for every student group. If the current year participation rate is less than 95%, this condition may be met if the average of the current and preceding year rates is at least 95%, or if the average of the current and two preceding years is at least 95%. Only actual participation rates are printed. If the participation rate printed is less than 95% and yet this school makes AYP, it means that the 95% condition was met by averaging.
2. At least 85% meeting/exceeding standards in reading and mathematics for every group. For any group with less than 85% meeting/exceeding standards, a 95% confidence interval was applied. Subgroups may meet this condition through Safe Harbor provisions. \*\*\*
3. At least 91% attendance rate for non-high schools and at least 82% graduation rate for high schools.

\* Includes only students enrolled as of 05/01/2010.

\*\* Safe Harbor Targets of 85% or above are not printed.

\*\*\* Subgroups with fewer than 45 students are not reported. Safe Harbor only applies to subgroups of 45 or more. In order for Safe Harbor to apply, a subgroup must decrease by 10% the percentage of scores that did not meet state standards from the previous year plus meet the other indicators (attendance rate for non-high schools and graduation rate for high schools) for the subgroup. For subgroups that do not meet their Safe Harbor Targets, a 75% confidence interval is applied. Safe Harbor allows schools an alternate method to meet subgroup minimum targets on achievement.