

# Panther Paws

September 2011

**GLENDALE SCHOOL**  
1000 Bloomington Road  
East Peoria, IL 61611  
(309) 427-5400

2011-2012

Mr. Sander, Principal  
Mrs. Sarver, Secretary

Mrs. Hajny, Grade 3  
Mrs. Martinez, Grade 3  
Mr. Stanfield, Grade 3  
Mrs. Weigle, Grade 4  
Miss Yerly, Grade 4  
Mr. Cordell, Grade 5  
Mrs. Elward, Grade 5  
Mrs. Zuercher, Special Needs  
Mrs. Miller, Aide  
Mrs. Wilson, Aide  
Mrs. Schuler, Special Needs  
Mrs. Vescogni, Collaboration  
Mrs. Harms, Aide  
Mrs. Teater, Literacy  
Miss Cuchna, ESL  
Mr. Cordry, Librarian  
Mr. Segbruch, P.E.  
Mrs. Barnes, Music  
Mrs. Robbins, Speech  
Mr. Newgard, Band  
Mr. Arity, Social Worker  
Mrs. Foley, School Nurse  
Mrs. Stake, Health Clerk  
Mrs. Warren, Health Clerk  
Mrs. Maddox, Cook  
Mrs. Norton, Cook  
Mr. Goble, Custodian  
Mr. Carman, Custodian



## Welcome to Glendale School!

### Meet Your Teacher Moves to Wednesday!

On Wednesday, August 31, at 6:00 p.m. Glendale School will host its annual **Meet Your Teacher Night**. Parents will meet in the gymnasium for a brief introduction to our staff and to our Parent-Teacher Club president. Our visitors will then be directed to classrooms for presentations by the teachers about their particular grade level and classroom operation. Two sessions will be held to allow parents with more than one child in the building to visit

both classrooms.

This is not an Open House or a Parent-Teacher Conference opportunity. Also, students do not ordinarily attend. Teachers will, however, have sign-up sheets if anyone would like to schedule a conference. Come visit us and get a glimpse of some of the experiences your child will have this school year.

All of our parents are invited to visit Mr. Sander's web. You may access it from the Glendale home page.

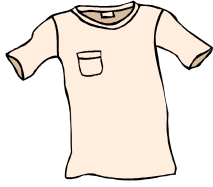
### Regular Schedule, September 6

Our regular schedule will begin on Tuesday, September 6. The student's school day begins at 8:50 a.m. The doors to Glendale School will not open until 8:20 a.m., unless prior arrangements have been made with a teacher.

Walkers, car riders, and bike riders will be dismissed at 3:20 p.m. Those picking up car riders are to come inside the building to pick up their student. The buses will begin loading at 3:25 p.m.

## District 86 Student Dress Code

Our students at Glendale are beginning to form their own tastes in what to wear to school. Most of what they choose is quite appropriate for the school environment.



However, the following are considered to be inappropriate and will not be allowed at school:

- Tank tops, or shirts with spaghetti straps
- Shirts that are backless or "see-through"
- Shirts that show the midriff or sides of the body (large arm holes)
- Extremely short shorts
- Extreme hairstyles, including unusual and unnatural hair color
- Pants that sag revealing a

student's underwear

We also discourage the use of make-up on students of this age.

For safety reasons, students' shoes are to be tied snugly on their feet in spite of the fact that it is fashionable to keep tennis shoes in a slip on/slip off basis. Shoes with rollers in them ("heellies") are also not allowed in school.

Students found to be in violation of these guidelines will be provided with a change of clothing or will be allowed to call home for a change of clothes. Repeated violations will result in consequences when any other school rule is violated.

If you have questions about the student dress code, please consult the Student Handbook, or contact Mr. Sander at the school.

## Glendale Behavior Incentive Program

Glendale School participates in a building-wide discipline plan. Each student will be given a "Pride Card" each month. Students have the ability to earn two points each day on their Pride Card—one for an "A" in effort, and one for an "A" in conduct for that day. At the end of the month, students who have the qualifying number of points will be invited to participate in a special event. (Note: There

are some situations that are outlined in the student's handbook where a student's ability to attend the special event might be automatically revoked by Mr. Sander.) Each student starts over completely at the beginning of each month.

Glendale staff members will be carrying "Caught You Being Good" tickets that will feed into each teacher's classroom plan for praise.

## Substitutes Needed

District 86 is always in need of good substitutes to fill in when our teachers and staff need to be absent. Please stop by the Administration Office

(attached to CJHS) for the necessary paperwork. If you have any questions, please call Susan at 427-5100.

## Glendale School Rules

The six basic rules for Glendale School are as follows:

*Glendale School's Students Say...*

*"I am responsible for my own actions."*

*"I will choose to treat others the way I want to be treated."*

*"I will choose to respect all Glendale staff and fellow students."*

*"I will choose to respect school property and the property of others."*

*"I will choose to behave in all school settings and at all school functions."*

*"I will accept the consequences, good or bad, for the choices I make."*

## Birthday Books

Beginning in September, students will be receiving their birthday books (purchased by the Glendale/Woodrow Wilson Parent-Teacher Club) during their lunch periods. Third graders receive a copy of Even of the Emperor Penguin; fourth graders receive Stone Fox; and fifth graders receive Bud, Not Buddy. Students in the self-contained class receive a copy of Biscuit Meets the Class Pet.

Students whose birthdays fall on a weekend or holiday will receive their book on the school day prior to their birthday. June, July, and August birthdays are given books in January, February, and March respectively. Best wishes!

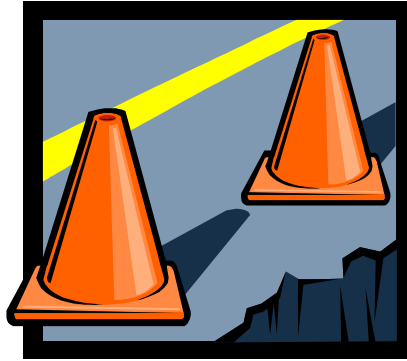
## Special Safety Procedures

The safety of our students is a primary concern here at Glendale. This is why we go to great lengths to provide the best possible security and procedures for our students. Glendale has taken the following safety steps to help keep them from harm.

First, color-coded fire drill procedures are installed in every room in the building outlining an evacuation route and an alternate route. Tornado/Storm procedures are also posted. Teachers have gone over these procedures with students, and drills are held regularly so students may practice the evacuations.

Second, between regular arrival and dismissal times, all Glendale doors are locked and secured. To enter the building, visitors must ring in with the security camera and be "buzzed" in (door unlocked). This is the same system used at Woodrow Wilson School.

Third, all visitors must first report to the school's main office and obtain a visitor's badge. We request that adults not approach children on the



playground until they have acquired a badge.

Fourth, all students who do not ride a bus (walkers, car riders, and bike riders) must check out with an assigned staff member at dismissal time. Students must have a note from a parent/guardian on file to be able to walk or ride home. Parents and/or guardians picking up children in the car need to come inside the front foyer and check in with the assigned dismissal duty staff member to get their child. This helps us ensure that we are releasing children to those individuals approved by the parent/guardian. If someone other than the parent picks up the child from school, please send a note to Mrs. Sarver with the person or persons' name(s)

listed. Walkers, car-riders, and bike riders are dismissed five minutes early on regular schedule (3:20 p.m.) to get them away from the building before the buses arrive.

Fifth, parent approved adults picking up a child during the school day (e.g., doctor appointments, sickness, emergencies, etc.) need to send a note (if possible) to the main office listing the time that the child needs to be picked up. This helps us to have the child ready at the given time. Children need to be picked up in the main office in person and signed out by the approved adult.

Sixth, Glendale School will soon hold its first fire and tornado drills for the school year. Bus evacuation drills have already been conducted.

We know that these rules are stricter than schools traditionally have had in the past and may be a little inconvenient for some, but we want to ensure the safety of our kids.

## Student Safety and Court Orders

There are many different family patterns and styles. Some families have had experiences that result in a court order of some type. To help maintain a safe environment and communicate correctly with all parties, we need your help. If there is a current court order (divorce, order of protection, etc.),



please permit us to make a copy of the portion that applies to custody or protection. This copy must include the stamp and signature of the court. Thank you for your cooperation.

## Labor Day



### - No School -

There will be no school on Monday, September 5, in observance of Labor Day. Students will not be in attendance on that day. Classes will resume at the regular time on Tuesday morning.

## Visiting Weeks

Glendale School will welcome parents and guardians on specially assigned weeks from 10:30 a.m. to 12:00 p.m. for grade five and the classrooms of Mrs. Zuercher and Mrs. Schuler and from 11:15 a.m. to 12:45 p.m. for grades three and four. Teachers will be sending home notes with a sign-up slip. Each student is allowed two visitors during the week. Please make sure you sign up ahead of time so that we can be ready for your visit. Visitors will make a forty-five minute visit to the classroom, attend lunch, and go out for recess. We encourage all visitors to try our school lunch.

5<sup>th</sup> Grade

Week of September 19

4<sup>th</sup> Grade

Week of September 26

3<sup>rd</sup> Grade

Week of October 3

## District Reading and Mathematics Testing

Students at Glendale School will be assessed using the Measures of Academic Progress (MAP) test for both reading and math beginning September 6. Both tests are administered on the computer. Teachers will let you know what days their class is scheduled for testing.

It is imperative that students work diligently to do their best. Students should plan to get a good night's sleep and a good breakfast every day - but especially for each day of testing.

These assessments allow teachers to see where the students are starting for the year and to adjust their individualized instructional methods accordingly. It is our goal to tailor instruction to the child rather than tailoring the child to the instruction. Students will also be taking these two assessments again in December and May of this school year.



## District 86 Board of Education

The District 86 Board of Education will hold its regular meeting Thursday, September 15 at 7:00 p.m. in the Administrative Offices board room.

## Glendale/Woodrow Wilson Parent-Teacher Club

The first meeting of the Glendale/Woodrow Wilson Parent-Teacher Club will be held at Woodrow Wilson School on Tuesday, September 13, at 6:00 p.m. You can also be a part of this active group. There are many ways that you can get involved - even if you work during the day hours. Everyone's input is important.

### *Club Officers 2011-2012*

#### *President*

*Mrs. Vanessa Hale*

#### *Vice President*

*Mrs. Marcie Gale*

#### *Secretary*

*Mrs. Michelle Eckberg*

#### *Treasurer*

*Mrs. Justin Hale*

#### *Ways & Means*

*Mrs. Jennifer Cowen*

#### *Parents' Advisory*

*Mr. David Moechnig*

*Mr. Jason Cowen*

## Midterms

The first midterm period will end on Friday, September 16. Parents can expect the midterms to arrive home on September 20.

## Head Lice Checks

Our district nurse, Mrs. Foley, will be visiting Glendale to do school-wide head lice checks very soon.

For more information about head lice and its treatment, please contact Mrs. Foley at 427-5118.

## Restaurant Food at School

Students in District 86 schools will not be allowed to have fast food or other restaurant foods brought or sent to school by a parent in the school lunchroom.

If you have any questions, please contact Mr. Sander at the school.



Glendale and Woodrow Wilson Schools will continue to offer the various monthly products offered by Market Day. Look for the note to come home with your child. The pickup day for this month will be Friday, September 9 at Woodrow Wilson School from 6:00 to 7:00 p.m.



Again this year, Glendale will be collecting General Mills' Box Tops for Education. Please send any labels from General Mills products that you might happen to use in your home. Every box top label generates ten cents for our school.

We also collect Campbell's soup labels for Woodrow Wilson School and recycle used printer cartridges.

## Student Meal Accounts



If a student should have an excessive negative balance on their student meal account, they will no longer be allowed to charge breakfast or lunch. They will, however, be given an alternative lunch (the minimum requirement for school meals) which will consist of a small sandwich and a milk. Additionally, these students will not be allowed to take extra side dishes, purchase water, or have dessert.

While these measures seem harsh, it is important for our accounts and records to be

balanced as the state monitors the activity in the cafeteria. Fiscal responsibility is important.

No child, however, will go without being given a lunch of some kind in this school district. If students wish to enjoy all the lunch as printed on the menu, however, families will need to keep meal accounts active with positive balances. Reminder notes are sent home frequently with students with negative balances.

If you have questions about your child's account, ask the child. If you have further questions, please feel free to contact Mrs. Maddox, Glendale cook, at 427-5402.

## Fall Fund-Raiser

This year's Fall Fund-Raiser for Glendale and Woodrow Wilson Schools will begin with a kickoff assembly on August 30. Watch for details to come home with your student.

## One Call Now

Again this year, District 86 will be using One Call Now to contact parents and guardians with important urgent information. Almost all of you have been contacted at one point or another by a recorded message from the District office. This is a very important part of our communication with home, particularly when the weather gets hazardous. If you would like to change or add an additional phone number to our One Call Now call list, you can access this link through the District website at [www.epd86.org](http://www.epd86.org).



## Printer Cartridges

Bring those old, worn-out printer cartridges to school for recycling instead of throwing them out! Glendale School has a collection basket in the foyer and receives money from a local company which recycles these cartridges. Help us earn money for our school by bringing in those empty cartridges!



## PE Reminders

P.E. shoes are required to participate in class and are the students' responsibility

### Keep in mind...

Good traction

Snug fit - tied tight for good support

Light Weight

### Stay away from:..

Backless shoes

Hiking boots

Crocs, flip flops, or sandals

If a student is not feeling well or has a minor injury the student's parent may write a note to miss PE. If it continues to bother the student, we need

a note from the doctor in order to excuse the student from PE. It is also a Glendale rule that if a student misses PE, they miss recess time also. PE is an important part of your student's education.

Some of the benefits of physical education include

- Reducing the risk of heart disease
- Improving fitness
- Increasing energy
- Better skills
- Learn sports and recreation
- And, of course, fun!

## Band

Mr. Newgard, the District 86 band director, will be here at Glendale on Wednesday, August 31 with the EPCHS Marching Band to recruit for our District 86 band. Mr.



Newgard will return to Glendale on Friday, September 2, and allow interested students to actually try out particular instruments.

Band sign-ups will be on Tuesday, September 7, at Central Junior High School from 4:00 to 7:00 p.m.

Students may join band when they enter the fifth grade. Students may join orchestra if they are in the fourth or fifth grade.



## Chorus

Our music teacher, Mrs. Barnes, will be holding chorus on Wednesday mornings at 8:00 a.m. beginning on September 7. Chorus is for any third, fourth, or fifth grade student who enjoys singing and wants to learn more about performance. Students are to have a signed permission slip to participate and must have an arranged ride to school. Join in on the fun!

## E-Mail

We have a rather extensive list of parent emails to help facilitate better communication between home and school. Email addresses were gleaned from students' registration cards; however, if there is some other or additional email a family wishes us to use, please let us know as soon as possible.

## Buses

Transportation for District 86 students is provided by First Student.

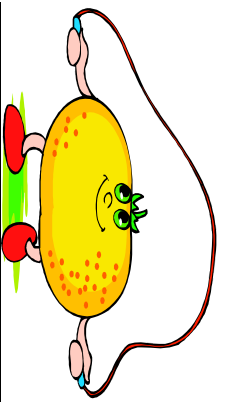


Any questions concerning bus drivers, times, or bus stop locations should be made to our office at 427-5400. Notes to drivers concerning special and rare circumstances must be turned in to the teacher and/or school office for the principal's signature. Drivers will not honor notes without school approval. Students are not allowed to ride a different bus or get off at a different stop unless it is an emergency situation.

Parents and students should review the list of bus rules on p. 11 in the Student Handbook. Let's help ensure that our kids have a safe ride to and from school.


# September 2011

Sun	Mon	Tue	Wed	Thu	Fri	Sat
				1 Heat Schedule 8:10-2:10	2 Heat Schedule 8:10-2:10 Band Instrument Try out 10:00-10:45 FALL PICTURES	3
4	5 <b>Labor Day</b>	6 Regular Schedule begins	7 Band sign up @CJHS 4:00-7:00	8	9	10
11	12	13 PTC@ WILSON 6:00 P.M.	14 FIRE DRILL 9:15A.M.	15 Board of Education@CJHS 7:00 P.M.	16	17
18	19 5th Grade Visiting Week	20	21 Mid-Term Grades sent home	22	23 Bank at School	24
25	26 4th Grade Visiting Week	27	28	29	30	



# September 2011



Mon	Tue	Wed	Thu	Fri
Menu is subject to change 				
5 Labor day <b>No school</b>	6 Pepperoni bosco sticks Pizza sauce Peas Applesauce	7 Popcorn chicken Cheesy mashed potatoes Green beans Bread stick Peaches	8 Stuffed crust pizza Lettuce salad/crotons Jell-O/whip topping	9 Turkey roll up Lettuce/cheese Baked chips Cookie Mandarin oranges
12 Corn dogs Mac n cheese Peas Mixed fruit	13 Hamburger/cheese French fries Baked beans Pineapple	14 Twisted cheese stix Pizza sauce Apple juice Cake	15 Crispy chicken wrap Lettuce/tomato/cheese Celery/peanut butter Cinnamon apples	16 Ravioli Whole wheat bread/butter Corn Pears
19 Mozzarella sticks Pizza sauce Mandarin oranges	20 Sub sandwich Nachos/salsa Corn Brownies	21 Chicken strips Curly fries Green beans Peaches	22 Tacos Lettuce/cheese/tomatoes Refried beans Fresh fruit	23 Hot dog/chili Tater tots Carrots Applesauce
26 McRib sandwich French fries Corn Pears	27 French toast sticks Sausage pattie Syrup Applesauce	28 Chicken fajitas Rice Green beans Dessert	29 Pizza Lettuce salad Carrots Grapes	30 Grilled cheese sandwich Sun chips Celery/cucumber/dip Pineapple

Our goal is to meet all federal and State guidelines, including caloric levels of 30% of calories from fat. 1% and no fat milk is offered daily. Light cheese is used in all of the pizza, Bosco products and mozzarella sticks along with whole wheat crust. Hot dogs, corn dogs and all lunch meat is turkey based. Don't forget increased physical activity is part of overall good health!